

[www.dajingmedical.com](http://www.dajingmedical.com) 🔍



**Compliance with Laws and Regulations**

---

**Design Safety Products**

---

**Elite Service Team**

---

**Provide with Excellent Service**

---

# Content

- P.03 **About Dajing**
- P.07 **Wireless Endoscope Camera System**
- P.09 **Full HD Endoscope Camera System**
- P.11 **Full HD USB  
Endoscope Camera System**
- P.13 **Endoscope Camera System  
with Display Screen**
- P.15 **Portable Endoscope Image System**
- P.17 **Video Recorder**
- P.19 **LED Light Source**
- P.20 **Portable Light Source**
- P.21 **Accessories**



## About Dajing

Dajing Medical is a high-tech company affiliated to Dajing Group, focusing on medical equipment R & D, production, testing and sales service. It is located in B5, Mangrove Science and Technology Innovation Center, Hengshan Science City, Yanfeng District, Hengyang City, Hunan Province with an area of 8,000 square meters, the company's main products: Ultra 4K endoscope camera system, full HD camera system, wireless endoscope camera system, medical cold light source, portable light source, migraine pain relief, pain treatment stickers and other products. Products can be used in ENT, gynecology, urology, orthopedics, general surgery, anorectal, pain and other departments.

Dajing Medical is relying on a great R & D team, focuses on the development of forward-looking products and technologies and develops leading medical products and technologies for China and the World, and strives to create and continuously improvement, so that more people in the world can obtain better medical care with affordable capabilities.







## EMC testing lab

Dajing is the first private company who owns EMC testing lab in Hunan, and the testing equipment is produced by German R & S, American CI, and domestic famous manufacturers. It has built a "966" electromagnetic compatibility 3m anechoic chamber, reliability lab, materials lab, and functions lab, simulation lab, safety lab and professional lab such as HALT, Dajing can also provide customers with one-stop EMC testing, rectification and product certification one-stop service, covering CCC, CE, CB and other domestic and international standard testing, involves medical electrical appliances, household appliances, military products, information technology equipment, audio and video equipment and other fields, and effectively shortens the certification cycle 30-60 days of electronic products in southern Hunan.



## SMT

Dajing has more than 10 sets of fully automatic high-speed and medium-speed multi-function placement machines imported from Japan, automatic printing machines, 16-temperature reflow soldering, AOI detector, BGA inspection and maintenance station to provide protection for product placement.





# Wireless Endoscope Camera System

## DJSXJ-1b

**1080 FHD+**



Portable



Wireless



Waterproof



Multi-display

### Usage

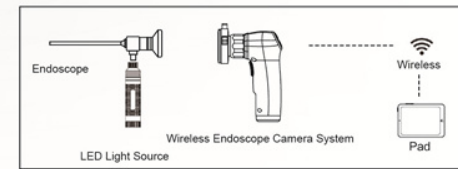
Clinic Inspection

Ward Inspection

Mobile Emergency

Teaching

### Connection



### Specification

Image Sensor	1/2.9"Sony IMX322 CMOS Sensor
Unit Cell Size	2.8 um x 2.8 um
Effective Pixels	1920 ( H ) X 1080 ( V )
Resolution	800 TVL
Photometry	Auto
Exposure	Auto
S/N	>54dB
Image Gamma	Auto
Shutter	Auto range 1/50 - 1/4000
Transmission	Wifi RTSP
Lens Mount	C-Mount
Scanning Mode	Progressive
Illumination Ref.	3000K-8000K
Min.Sensitivity	20Lx F1.4
Waterproof	Waterproof Design
App System	iOS, Android
Storage Mode	Pad storage or option 64G Highspeed TF card to build in
Data Read	USB or App Online Read
White Balance	Manual
Language	Chinese, English
Handle Button	Picture, Video, White balance
Battery	Built-in rechargeable and replaceable Li-ion Battery DC3.7V 3400mAh
Working Time	4 hours on continuous use
Power Saving Design	Automatic shutdown after 10 mins static
Charge Requirement	DC5V 2A
Working Temperature	0°C ~ +40°C
Power Supply	AC100~240V 50/60 Hz
Weight	200g

### Feature

- Built-in SD Card, with picture and video function
- High image quality, Resolution 800TVL, S/N:54dB
- 1/2.9"Sony IMX322 CMOS Sensor
- Transmission: Wifi RSTP
- Built-in rechargeable and replaceable Li-ion Battery
- 4 hours on continuous use
- Portable, Mobile

# Full HD Endoscope Camera System

## DJSXJ-IIa

**1080 FHD+**



Self - Development



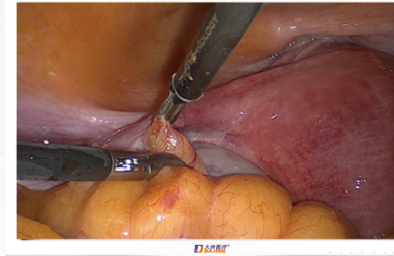
Anti - interfere



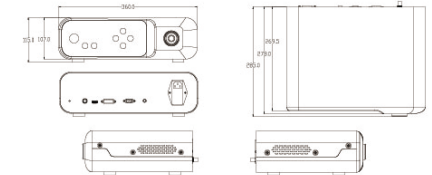
Easy operation



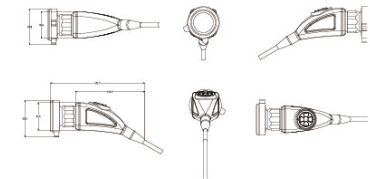
Vivid image



Control Unit Appearance



Camera Head Appearance



### Specification

Image Sensor	1/1.9"Sony IMX185 CMOS Sensor
Unit Cell Size	3.75 um x 3.75 um
Effective Pixels	1920 ( H ) X 1080 ( V )
Resolution	1000 TVL
Photometry	Average, peak and area photometry
Exposure	Auto / Manual
S/N	>54dB
Image Gamma	0.45, 0.55, 0.65, 0.75
Shutter	Auto range 1/50 - 1/4000
AGC	0 - 20 dB Adjustable
Lens Mount	C-Mount
Scanning Mode	Progressive
Illumination Ref.	3000K-8000K
Min.Sensitivity	20Lx F1.4
Waterproof	Camera head IPX7 waterproof
Transmission	SMPTE 424M 3G-SDI, 75Ω
Output Signal	HDMI,DVI,SDI,VGA,( 1080P 60Hz,720P 60Hz, 1024 x 768 60Hz, Video ( 480P )
Image Processing	Noise reduction algorithm ( 2D / 3D ), color density 30 levels ( user adjustable ), edge enhancement, contrast adjustment, image magnification ( 16 times digital magnification ) blood vessel enhancement, anti-fog function, strong light suppression
White Balance	Manual
Language	Chinese, English
Handle Button	Picture, Video, White balance
Working Temperature	0℃~+40℃
Power Supply	AC100-240V 50/60 Hz
Size	Handle: 32mm x 32mm x 80mm Cable: 3m
Weight	Control Unit: 360mm x 285mm x 120mm 4kgs

### Feature

- 8 endoscope mode settings
- IPX7 Waterproof
- Freeze and digital 16 times magnification function
- Resolution 1000TVL, S/N:54dB
- 1/1.9" FHD ( 1920 x 1080 )
- Multi-resolution synchronous output
- 4 buttons of camera head can be customized
- With twice optical zoom technology, lossless view of the field of view with twice optical magnification



# Full HD USB Endoscope Camera System

## DJSXJ-IIc

### 1080 FHD+



Self - Development



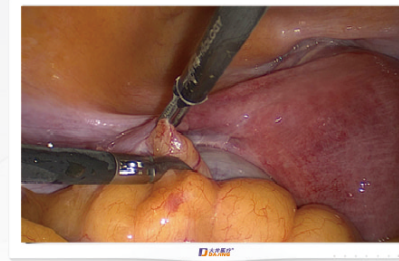
Anti - interfere



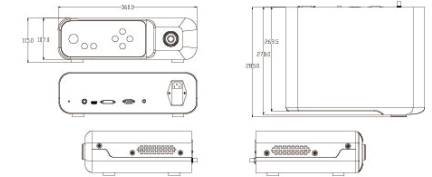
USB Storage



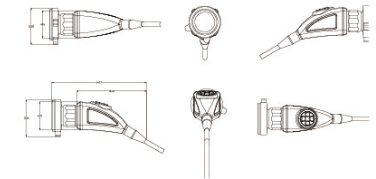
Vivid image



Control Unit Appearance



Camera Head Appearance



### Specification

Image Sensor	1/1.9"Sony IMX185 CMOS Sensor
Unit Cell Size	3.75 um x 3.75 um
Effective Pixels	1920 ( H ) X 1080 ( V )
Resolution	1000 TVL
Photometry	Average, peak and area photometry
Exposure	Auto / Manual
S/N	>54dB
Image Gamma	0.45, 0.55, 0.65, 0.75
Shutter	Auto range 1/50 - 1/4000
AGC	0 - 20 dB Adjustable
Lens Mount	C-Mount
Scanning Mode	Progressive
Illumination Ref.	3000K-8000K
Min.Sensitivity	20Lx F1.4
Waterproof	Camera head IPX7 waterproof
Transmission	SMPTE 424M 3G-SDI, 75Ω
Output Signal	HDMI,DVI,SDI,VGA, ( 1080P 60Hz,720P 60Hz, 1024 x 768 60Hz, Video ( 480P )
Recording function	Support U disk or mobile hard disk for 1080P recording
Video storage format	MP4 format for H.264/H.265 encoding storage
White Balance	Manual
Language	Chinese, English
Handle Button	Picture, Video, White balance
Working Temperature	0℃ ~ +40℃
Power Supply	AC100-240V 50/60 Hz
Size	Handle: 32mm x 32mm x 80mm Cable: 3m Control Unit: 360mm x 285mm x 120mm
Weight	4kgs

### Feature

- 8 endoscope mode settings
- IPX7 Waterproof
- Freeze and digital 16 times magnification function
- Resolution 1000TVL, S/N:54dB
- 1/1.9"FHFD ( 1920 x 1080 )
- Multi-resolution synchronous output
- 4 buttons of camera head can be customized
- Support the photos taking during process of recording photos, and the video capture does not affect

# Full HD Endoscope Camera System with Display Screen

**1080 FHD+** DJSXJ-II d



Self - Development



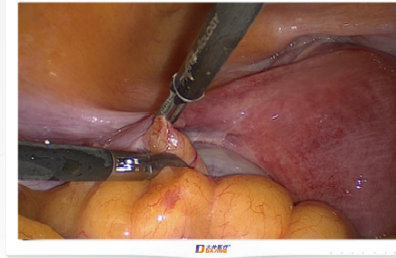
Anti - interfere



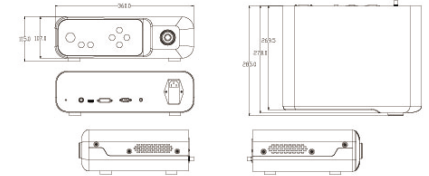
Video Record



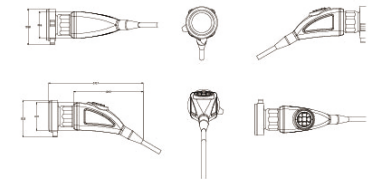
Vivid image



Control Unit Appearance



Camera Head Appearance



## Specification

Image Sensor	1/1.9"Sony IMX185 CMOS Sensor
Unit Cell Size	3.75 um x 3.75 um
Effective Pixels	1920 ( H ) X 1080 ( V )
Resolution	1000 TVL
Photometry	Average, peak and area photometry
Exposure	Auto / Manual
S/N	>54dB
Image Gamma	0.45, 0.55, 0.65, 0.75
Shutter	Auto range 1/50 - 1/4000
AGC	0 - 20 dB Adjustable
Lens Mount	C-Mount
Scanning Mode	Progressive
Illumination Ref.	3000K-8000K
Min.Sensitivity	20Lx F1.4
Waterproof	Camera head IPX7 waterproof
Transmission	SMPTE 424M 3G-SDI, 75Ω
Output Signal	HDMI,DVI,SDI,VGA,( 1080P 60Hz,720P 60Hz, 1024 x 768 60Hz, Video ( 480P )
Display Screen	5.0 inch, Resolution 800 x 480
Recording function	Support U disk or mobile hard disk for 1080P recording
Video storage format	MP4 format for H.264/H.265 encoding storage
White Balance	Manual
Language	Chinese, English
Handle Button	Picture, Video, White balance
Working Temperature	0℃~+40℃
Power Supply	AC100~240V 50/60 Hz
Size	Handle: 32mm x 32mm x 80mm Cable: 3m Control Unit: 360mm x 285mm x 120mm
Weight	4kgs

## Feature

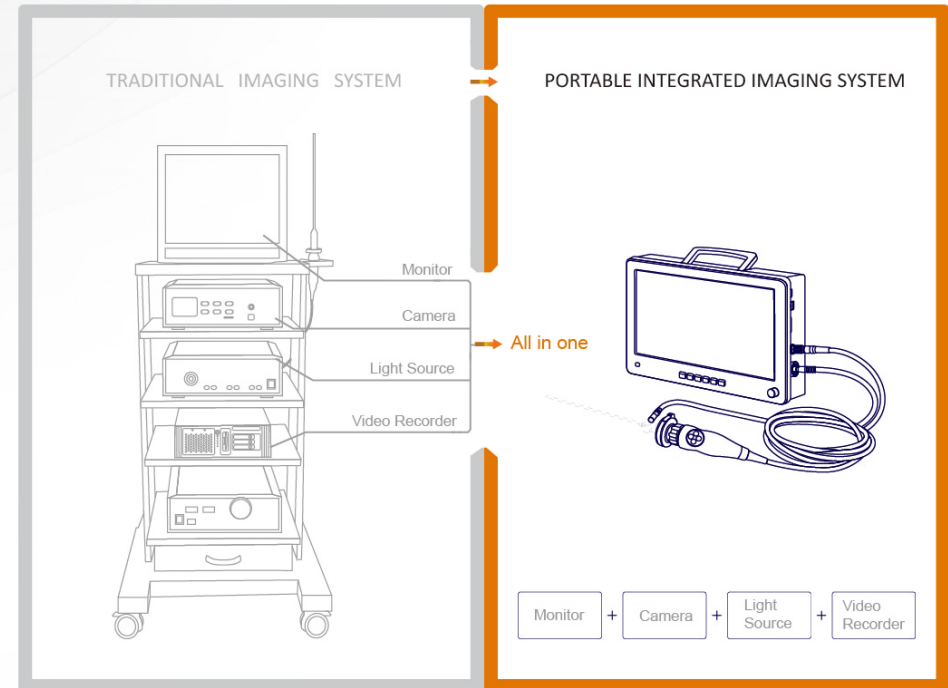
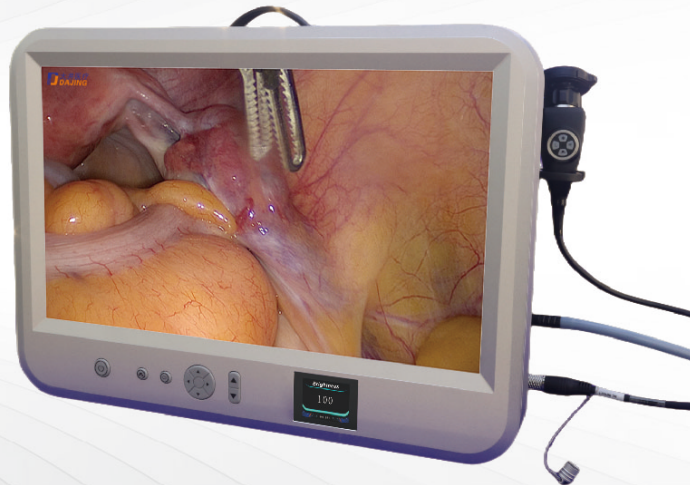
- 8 endoscope mode settings
- IPX7 Waterproof
- Freeze and digital 16 times magnification function
- Resolution 1000TVL, S/N:54dB
- 1/1.9" FHD ( 1920 x 1080 )
- Multi-resolution synchronous output
- 4 buttons of camera head can be customized
- Support the photos taking during process of recording photos, and the video capture does not affect



# Portable Endoscope Image System

## DJSXJ-IIe

**1080 FHD+**



Portable



All in one



Video Record



Vivid image

### Specification

Image Sensor	1/2" CMOS Sensor
Effective Pixels	1920 ( H ) X 1080 ( V )
Resolution	1000 TVL
S/N	>54dB
Shutter	Auto
Lens Mount	C-Mount
Illumination Ref.	5000K-8000K
Min.Sensitivity	20 Lux
Output Signal	HDMI SYNC.
Ratio	16:9
Display Screen	22"
Video storage format	H.264 1980 X 1080
Recording function	Support U disk
White Balance	Auto/Manual
Handle Button	Picture, Video, White balance
Working Temperature	0°C ~ +40°C
Power Supply	AC100-240V 50/60 Hz

### Feature

- 4 in 1 integrated design
- Portable
- Freeze and replay
- Resolution 1000TVL, S/N:54dB
- Support SD Card
- 4 buttons of camera head
- Support picture and video capture

# Video Recorder DJREC-FHD

1080 FHD+



Self - Development



Anti - interfere



Easy operation



Vivid image

## Specification

Display Screen	5.0 inch, Resolution 800 x 480
Recording function	Support U disk or mobile hard disk for 1080P recording
Video storage format	MP4 format for H.264/H.265 encoding storage
Input	HDMI 2.0 Max.Support 3840 x 2160P Input
Output Signal	HDMI OUT HDMI RECOUT
Video Resolution	1080P 60Hz
Picture funtion	Support the photos taking during process of recording photos, and the video capture does not affect
Power Supply	AC100-240V 50/60 Hz
Size	Control Unit: 360mm x 285mm x 120mm
Weight	3kgs



## LED Light Source

DJGY-1a  
DJGY-1b



Lamp Life  
≥ 20000 hours



High brightness



Over temperature  
protection



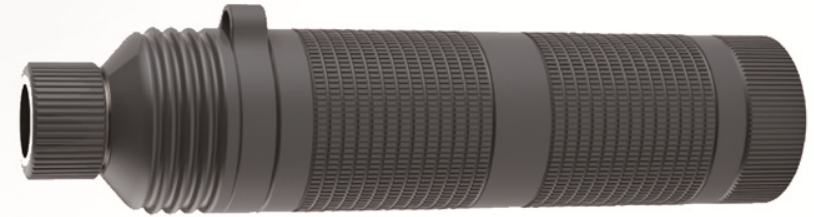
Natural light  
color temperature



Touch button,  
life ≥ 100,000 times

## Portable Light Source

LEDQM-01



Portable



Waterproof



100 level light adjustment



Natural light  
color temperature



4 hours on  
continuous use

### Specification

Screen	3.2" TFT LCD Screen
Lamp	60W or 90 W
Color Temperature	5700K, natural light color temperature
Display Index	RA≥ 92
Illumination	2000000LUX
Lamp Life	≥ 20000 hours
Light system	Integrated light cone concentrating system, uniform light spot
Heat dissipation structure	Heat pipe cooling system, temperature of device is controlled under 41degrees
Fan system	Delta ball fan, long life
Application	Use with endoscope camera system
Operation mode	Touch button, the life span reaches 100,000 times
Memory function	Record the brightness of the last user, cumulatively record the working time of the bulb
Protection function	Bulb life alarm, fan abnormal alarm, over temperature protection
Power Supply	AC100-240V 50/60 Hz
Fuse	T2AL/250V , φ5.2 x 20
Size	360mm x 285mm x 120mm

### Specification

Power	3W
Color Temperature	5700K, natural light color temperature
Display Index	RA=90
Illumination	300000LUX
Lamp Life	≥ 20000 hours
Battery	Built-in chargeable li-ion battery DV3.7V 3400mAh
Working hours	4 hours on continuous use
Power Supply	AC100-240V 50/60 Hz
Weight	120g



### Sinoscope

BD04	0° 4MM x 175MM
BD04W	0° 4MM x 175MM Wide angle
BD34	30° 4MM x 175MM
BD34W	30° 4MM x 175MM Wide angle
BD44	45° 4MM x 175MM
BD74	70° 4MM x 175MM
BD02W	0° 2.7MM x 175MM Wide angle
BD32W	30° 2.7MM x 175MM Wide angle

### Larynoscope

HJ76	70° 6MM x 175MM
HJ78	70° 8MM x 175MM
HJ98	90° 8MM x 175MM



### Coupler OC01

F16, F18, F20, F22, F25, F28, F32, F35



### Otoscope

RJ045	0° 4MM x 50MM
RJ345	30° 4MM x 50MM
RJ041	0° 4MM x 100MM
RJ021	0° 2.7MM x 100MM
RJ321	30° 2.7MM x 100MM

### Laparoscope

FQ05	0° 5MM x 330MM
FQ35	30° 5MM x 330MM
FQ01	0° 10MM x 330MM
FQ31	30° 10MM x 330MM



### Zoom Adaptor ZC2035

F20-F35

### Light Guide Cable autoclavable

JG-001041	4MM x 2500MM
JG-001088	4MM x 3000MM



### Monitor 24" HD

- LED 24 "
- Resolution: 1980 x 1200
- Brightness: 450cd/m<sup>2</sup>
- Contrast ratio: 1000:1
- Visual angle:178° (H)/178° (V)
- Format: 16:10
- Video input: DVI-I, VGA,CVBS,S-VIDEO,YPbPr,RGBS,SDI
- Video output: DVI-I, CVBS,S-VIDEO,YPbPr,RGBS,SDI
- Package Size: 720mm x 550mm x 310mm
- Weight: 10.85kg

### Monitor 27" HD

- LED 27 "
- Resolution: 2560 x 1440
- Brightness: 420cd/m<sup>2</sup>
- Contrast ratio: 1000:1
- Visual angle:178° (H)/178° (V)
- Format: 16:9
- Video input: HDMI , DVI, DP, VGA, USB
- Package Size: 800mm x 545mm x 300mm
- Weight: 10.0kg

### Monitor 27" 4K

- LED 27 "
- Resolution: 3840 x 2160
- Brightness: 800cd/m<sup>2</sup>
- Contrast ratio: 1000:1
- Visual angle:178° (H)/178° (V)
- Format: 16:9
- Video input: HDMI 2.0,HDMI 1.4, DVI, DP, VGA, SDI
- Video output: SDI Optional
- Package Size: 800mm x 545mm x 300mm
- Weight: 10.0kg

### Monitor 32" 4K

- LED 32 "
- Resolution: 3840 x 2160
- Brightness: 700cd/m<sup>2</sup>
- Contrast ratio: 1350:1
- Visual angle:178° (H)/178° (V)
- Format: 16:9
- Video input: DP/3 \* HDMI/VGA
- Package Size: 960mm x 640mm x 330mm
- Weight: 13.7kg





### LED Head Light HL-03

- >Voltage:AC 90-240V 50-60Hz
- >Blub Power: LED 3W
- >Color temperature: 4000~5500K
- >Bulb life: ≥50000h
- >Illumination: ≥12000Lux
- >DC charging time: ≤5h
- >Power supply time:≥4h
- >Load weight on head:200g
- >Net weight:450g
- >Package size:230\*190\*130mm
- >Package material:paper box



### LED Head Light HL-03i

- >Voltage:AC 90-240V 50-60Hz
- >Blub Power: LED 3W
- >Color temperature: 4000~5000K
- >Bulb life: ≥50000h
- >Illumination: ≥12000Lux
- >DC charging time: ≤5h
- >Power supply time:≥4h+2h
- >Load weight on head:270g
- >Net weight:430g
- >Package size:230\*190\*130mm
- >Package material:paper box



### Trolley

- Layers amd layer height adjustable, Proposal load ≤20kg/Layer
- Cart Size: 664mm x 638mm x 1650mm
- Worksurface height: 1125mm
- Worksurface Size: 527mm x 420mm
- Rocker arm for display, height - adjustable, 360° rotation for LCD, Standard Load ≤10kg, optional maxium load ≤21kg
- Special power wiring slot